

# EXPAND YOUR COMFORT ZONE



GARCIA  
yachts



NOWHERE YOU CAN'T GO



**RADICAL.  
ALL TERRAIN.  
SPACIOUS.**

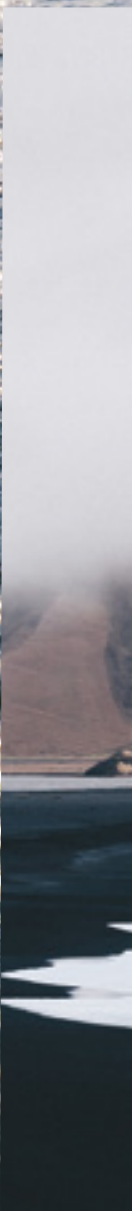
Discover the world under sail, all while enjoying generous space. The Garcia Exploration 52 takes the fundamentals of the 45 — aluminium hull, centreboard, twin rudders, inverted coachroof, deck saloon, watertight door, double glazing thermal insulation — but adds volume and storage: three double cabins and a technical compartment.

Aboard this model, that's as versatile and safe as ever, the most remote places on the planet, from high latitudes to tropical regions, are now accessible to families or larger crews.

Conceived without compromise, radical in its approach and design, the Garcia Exploration 52 will take you exploring in the most remote regions of the planet, in complete comfort. Designed to protect you, with independence in mind, total safety, and self-sufficiency.

NOWHERE YOU CAN'T GO







## **A CONTEMPORARY APPROACH TO ADVENTURE ACROSS THE SEAS**

The challenge is no longer to brave the risks, as the pioneers of ocean yachting did, but simply to dare to take your place in the best observation post in the world, to exploit the potential of intelligent vessels prepared to provide security and transport wherever you like, and in the greatest comfort, for modern nomads wanting to explore natural spaces, alone or accompanied by their families.



**VENTURE TO  
ASTONISHING PLACES,  
FOLLOWING TRADITIONAL  
OR MORE UNUSUAL ROUTES**



## **ACCEPT NO COMPROMISES**

Join the extremes, visit opposing regions, discover astonishing locations, endless oceans and a wealth of archipelagos.

Uncompromising in her design and choices, the Garcia Exploration 52 has been designed to make the most of the moment, both on the way there and once at your destination, always with peace of mind. With this boat, you'll get a taste of the unknown but never of the uncertain.

**EXPAND  
YOUR  
COMFORT  
ZONE**





## **FEEL THE FLOW**

Cautious or intrepid, whatever your project, you'll be able to live it to the full without leaving your comfort zone. Garcia Yachts makes the adventure simple: the overall design of the boat, the choice of equipment, the general layout, all contribute to reassuring you in your project and mitigating any risks. The Garcia Exploration 52 will push your limits and expand your horizons.



# EXTENDED CONCEPT OF COMFORT

## WE GO THE EXTRA MILE, SO YOU CAN TOO

Garcia Yachts pushes the fundamentals of blue water yachts, encompassing every aspect of the onboard experience within the concept of integral comfort, designed according to a systemic approach to the vessel, rather than as an addition of functions.

- \_ seakeeping and ease of use
- \_ protected cockpit
- \_ panoramic views from inside
- \_ safety in all conditions, the result of an overall risk management strategy
- \_ sound insulation: soothing comfort in all circumstances
- \_ easy maintenance
- \_ support from the teams at Garcia Yachts and the active owners' community







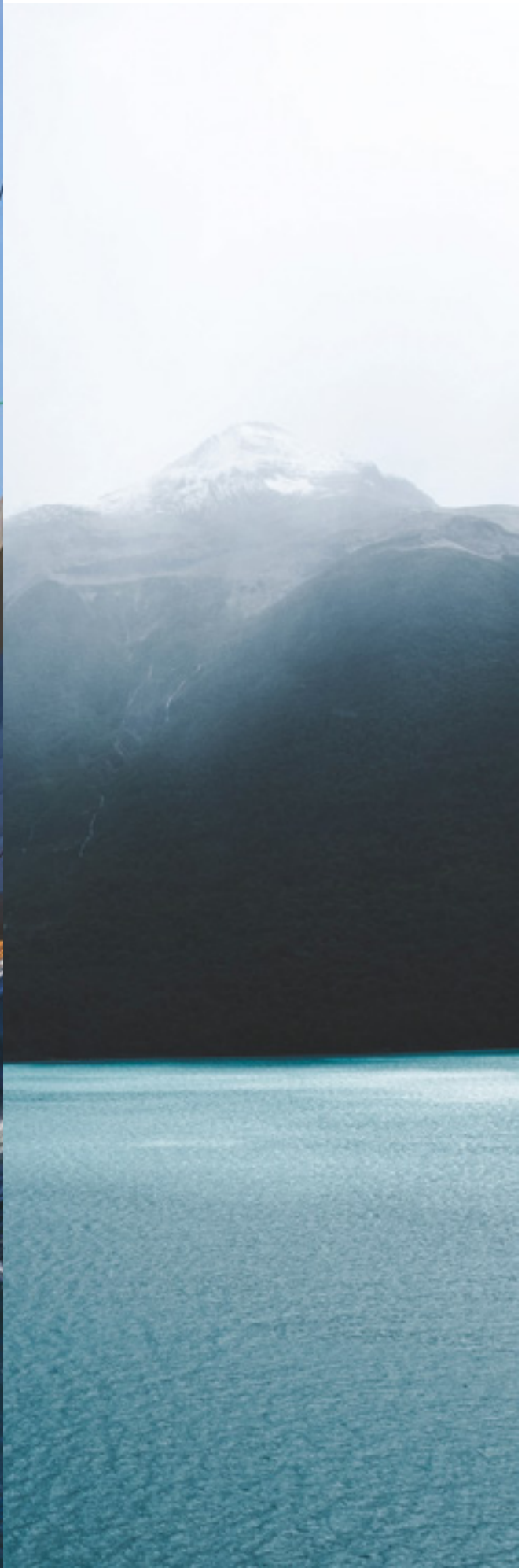
# INSIDE OUT

## THE PANORAMIC INTERIOR TRANSFORMS SAILING AND THE QUALITY OF LIFE ON BOARD

Not just clarity: whether you're sat at the interior helm, or at the saloon table, or standing in the galley, a 270° view opens up to the outside, offering an intimate connection to your surroundings, whether you're under way or at anchor.

Not just space: benefit from the high quality of the interior, equipment and finishes that create a neat and protective atmosphere on board.









## **A HAVEN OF PEACE, WHEREVER YOU ARE AROUND THE GLOBE**

Leave port, leave your obligations, leave everything behind for the duration of your voyage - everything except your comfort.

The Exploration 52 offers elegant, uncluttered, warm and refined spaces.

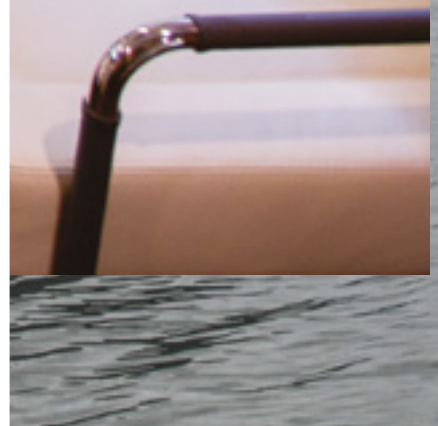
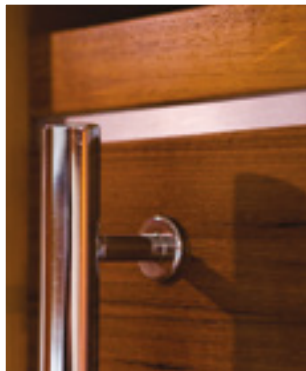
You're aboard a thermally and acoustically insulated yacht, designed with meticulous attention to materials and detail.

No tricks, no shiny gimmicks, just a fine, subtle design that's soothing when the surrounding nature might be harsh or the conditions challenging.



The Exploration 52 offers dedicated, functional spaces and a layout carefully designed for your comfort. The forward part of the cockpit is protected by an elegant hard-top, forming a true second exterior saloon.

Below the saloon, a double cabin can be used to accommodate guests or a crew member. This model also features a genuine laundry room, dedicated exclusively to domestic appliances and linen storage.





**CONCEPTS THAT TRANSFORM THE EXPERIENCE**





## ALUMINIUM HULL & CENTREBOARD

### ROBUSTNESS AND DURABILITY

Aluminium is a strong, durable material that will deform in the event of an impact, without tearing.

### SEAKINDLINESS

A modern and stable hull. The centring of the weights (chain locker at the foot of the mast, centred fuel tanks) limits the boat's pitching, enhancing its seaworthiness and sailing comfort.

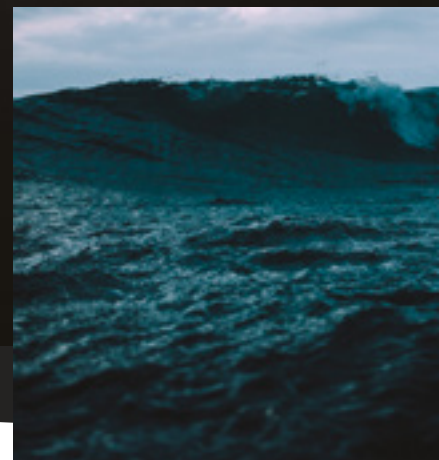
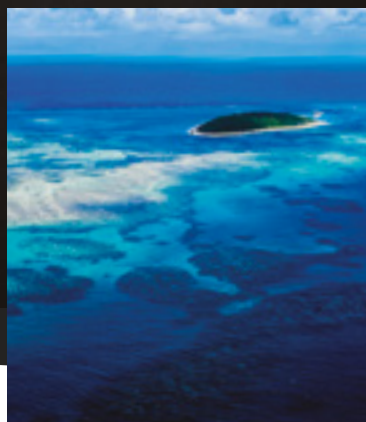
### ACCESS LAGOONS, SHOAL DEPTHS AND EVEN BEACHES

Beyond the freedom this offers, it's also a key safety feature and a maintenance advantage. The most intrepid sailors will be able to venture serenely into areas still poorly charted. It's also the reassuring possibility of being able to access sheltered areas.

### COURSE-KEEPING STABILITY DOWNWIND, CENTREBOARD RAISED

On downwind points of sail, with the daggerboard raised, movements are smoother. And thanks to the twin rudders, the boat remains perfectly stable.

In extreme sea conditions, these same appendage characteristics mean that the boat can head down a wave at speed without being tripped up by a keel.





## DESIGNED TO PROTECT

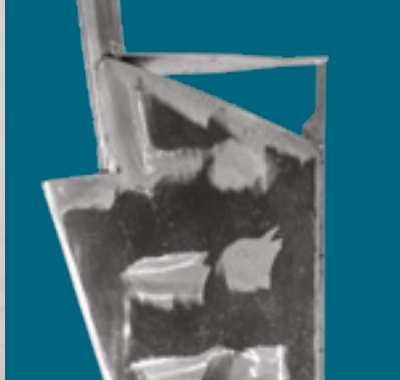
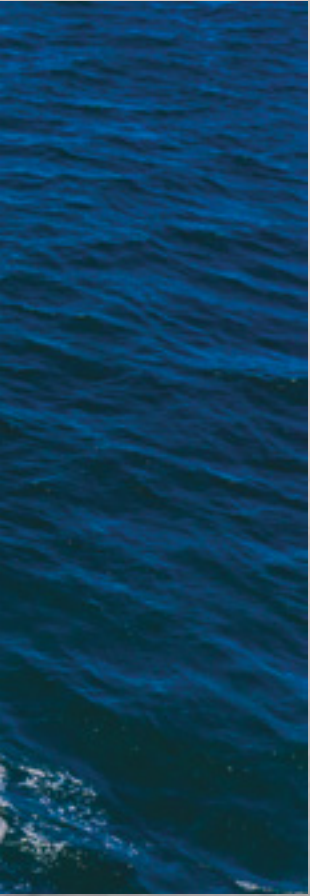
### SERENE SAILING: A SYSTEMIC APPROACH TO RISK MANAGEMENT

Garcia Yachts manages risks "by design": they are identified and their consequences are minimised, from the design of the vessel through to support in the implementation of your programme.

Our owners and their families entrust us with their dreams, their aspirations, but also their lives... We take care of all of them, with the same rigour.

### STRUCTURE AND EQUIPMENT

- \_ centreboard for comfort at sea, as well as for shelter in shallower waters, and the option to take the ground
- \_ several watchkeeping stations: 2 helm stations outside, under the shelter of the cap when the weather isn't so great, and inside should conditions become more severe
- \_ cockpit protected by a cap
- \_ proactive measures to counter the possibility of an impact:
  - \ perfect mechanical properties of an aluminium hull (strength, deformability and repairability)
  - \ reinforced bow for ice
  - \ protected twin rudders with sacrificial zones
  - \ crash boxes
  - \ watertight door
  - \ double glazing
- \_ vessel resilience:
  - \ redundancy of key systems and features
  - \ reliability and easy repair of components all easily accessible



## SYSTEMS

- \_ electric thrusters
- \_ central boat management system (electrics, electronics, water, systems, etc.)



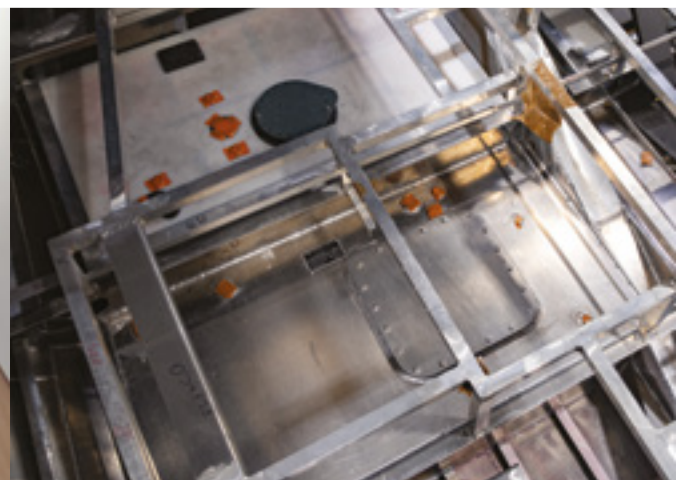
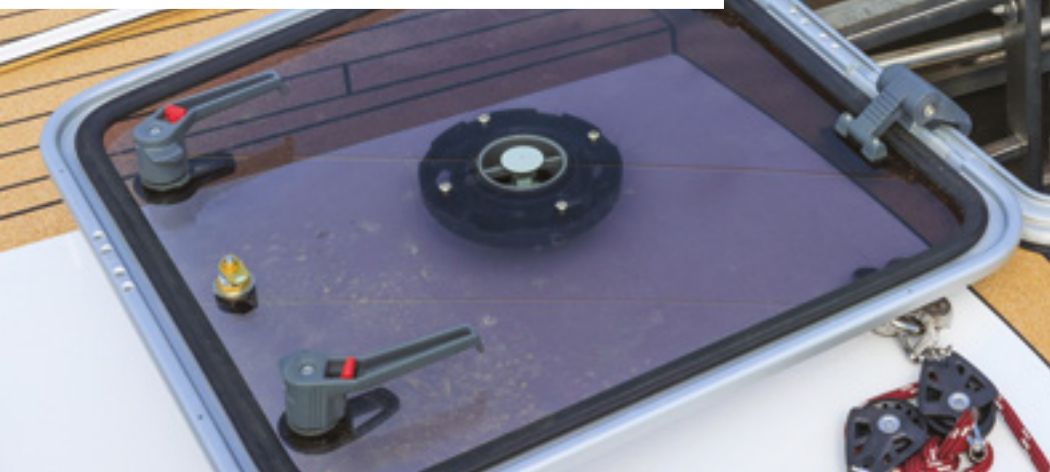
# DESIGNED FOR INDEPENDENCE

## SELF-SUFFICIENCY ON BOARD

- \_ large fuel + water capacity
- \_ large storage spaces
- \_ energy production, water production
- \_ insulated vessel, more economical

## AUTONOMOUS MAINTENANCE

- \_ technical compartment (in comfort version) and parts and consumables store adapted to the programme
- \_ easy access to equipment
- \_ training of owners in the maintenance and repair of key boat systems



# THE GARCIA SPIRIT



## SHIPYARD COMMITMENT, TEAM SUPPORT AND AN ACTIVE COMMUNITY

Teaming up with Garcia Yachts for the construction of a sailing yacht means building a boat that is fully adapted to your needs, while benefiting from the expertise and sound advice of our team at every stage.

It's also about complete support throughout the configuration and construction phase of your yacht, during delivery, with a personalised handover, technical training and a network of professionals on hand in all major cruising destinations. The dedicated Grand Large Services structure provides owners with a range of services to help them prepare for their voyage and cast off with complete peace of mind.



## AMBITIOUS PERFORMANCE TO MEET THE MOST DEMANDING REQUIREMENTS.

Garcia Yachts builds boats that shine differently in the eyes of our owners, whether they're passionate about sailing or have plans for a getaway, expert seafarers or novices, but that always shine for really good reasons.

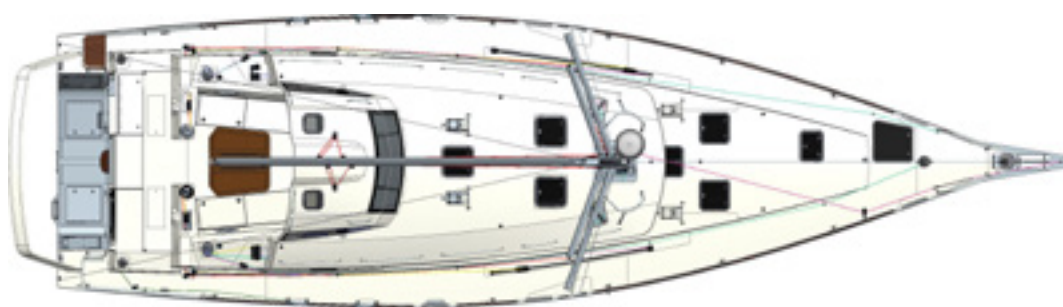
We work hard to ensure that everyone on board gets to experience the pleasure of exploiting the full potential and qualities of the boat, as well as the comfort and tranquillity of being on board, and ultimately the desire to continue their journey that little bit further or little bit longer...

# INTERIOR LAYOUTS & TECHNICAL SPECIFICATIONS

## EXPLORATION 52

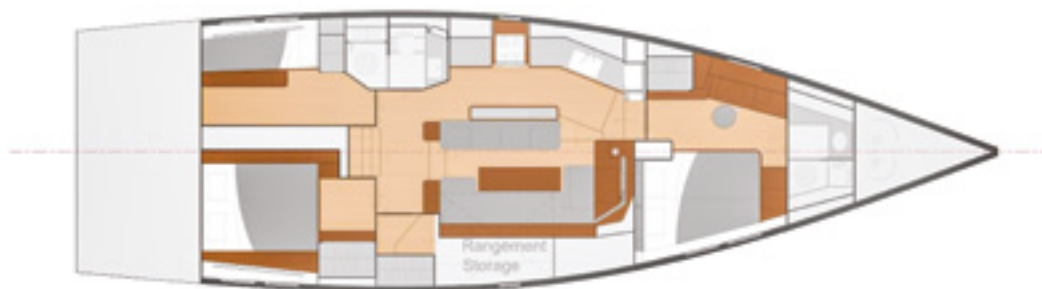


|                                  |   |
|----------------------------------|---|
| Length overall                   | 16,65 m                                 |
| Beam                             | 4,80 m                                  |
| Draught (centreboard down)       | 2,90 m                                  |
| Draught (centreboard raised)     | 1,27 m                                  |
| Air draught (excluding antennas) | 21,50 m                                 |
| Displacement (est.)              | 19,5 t                                  |
| Ballast                          | 6,57 t                                  |
| Upwind sail area                 | 120.5 m <sup>2</sup>                    |
| Gennaker/Spinnaker               | 130 m <sup>2</sup> / 186 m <sup>2</sup> |
| Engine                           | 110 CV                                  |
| Diesel capacity (est.)           | 1 200 l                                 |
| Water capacity (est.)            | 880 l                                   |
| Number of cabins                 | 3-4                                     |
| Number of berths                 | 5-6-8                                   |



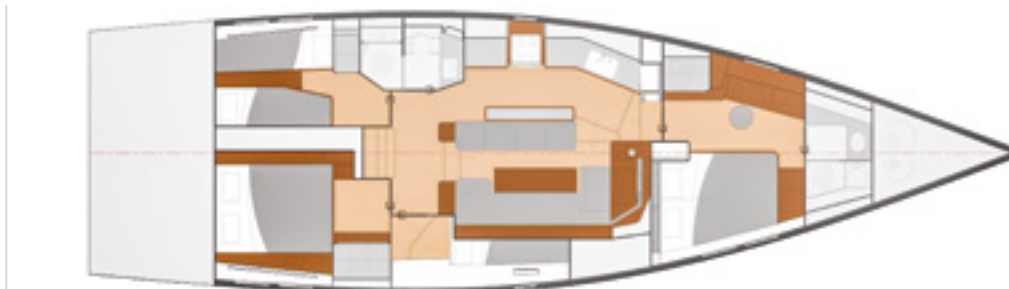
### STANDARD VERSION

2 CABINES DOUBLES + 1 CABINE SIMPLE + 2 SDB + 1 GRAND ESPACE DE STOCKAGE



### MULTI VERSION

4 CABINES DOUBLES + 2 SDB





Credits – Jérôme Houyvet / Aymeric Picot / Cristina Glebova  
Redcharlie / Emma Francis / Ernests Vaga / Mike Smith / Andrew Neel Caleb  
Woods / Fer Nando / Francesco Ungaro / Hector John Periquin  
MK photography / Tim Marshall / J. Houyvet / Ahmer Kalam / Chattermark  
All rights reserved.  
Design & conception – [www.chattermark.co](http://www.chattermark.co)

This document is for commercial use only and does not form part of a contractual offer. It may include optional equipment, which may be modified without notice. The plans and 3D renderings presented here may not be used or reproduced without written authorisation from the shipyard.

©Garcia Yachts - September 2023



GARCIA  
y a c h t s

NOWHERE YOU CAN'T GO

[www.garciayachts.com](http://www.garciayachts.com)

MEMBER OF  GRAND LARGE  
YACHTING